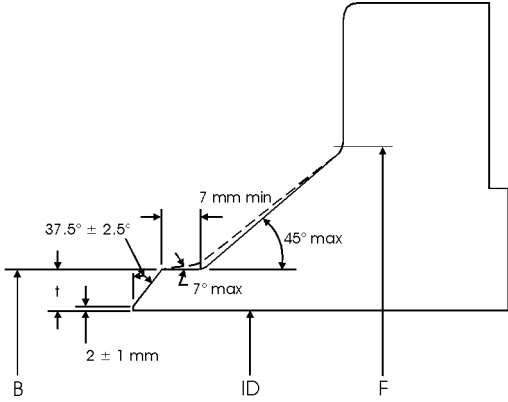
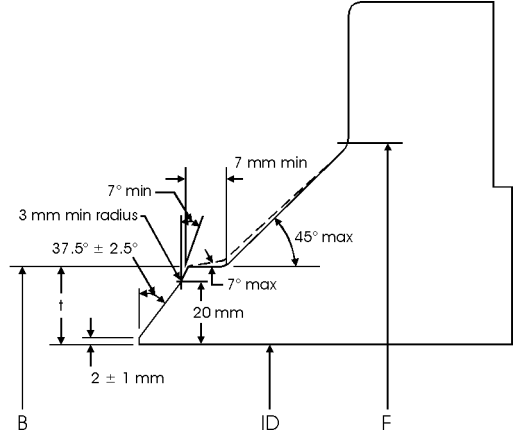


Weld Neck Flange - Welding Ends



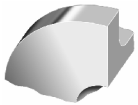
Welding end for Wall Thickness (t) from 5 mm to 22.2 mm



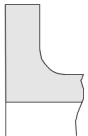
Welding end for Wall Thickness (t) > 22.2 mm

Flange Facings - BS 4504

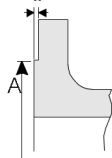
BS 4504 flange facing types A to H are defined below. The dimensions vary with pipe size (DN) and pressure rating (PN) as detailed in the following table.



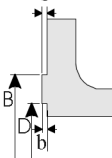
Type A
Flat face



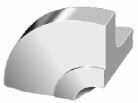
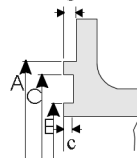
Type B
Raised face



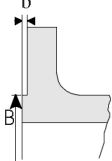
Type C
Tongue face



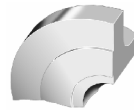
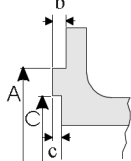
Type D
Groove face



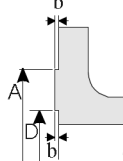
Type E
Spigot



Type F
Recess



Type G
'O' Ring recess



Type H
'O' Ring groove

