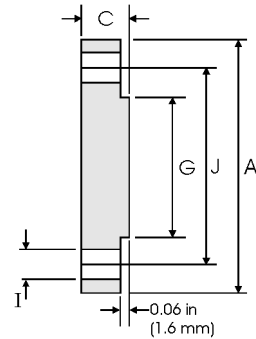
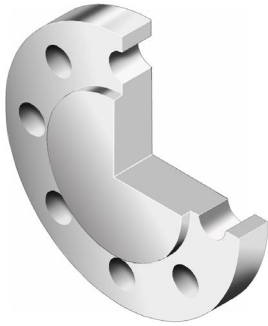




Blind Flanges-ANSI B16.5 Class 150 lbs



Pipe		Flange Data			Raised Face	Drilling Data			Weight
Nominal Pipe Size		A	C	G	H	I	J		
	Outside Diameter	Overall Diameter	Flange Thickness min	Face Diameter	Number of Holes	Bolt Hole Diameter	Diameter of Circle of Holes	kg/piece	
	in mm	in mm	in mm	in mm		in mm	in mm		
1/2	0.840	3.500	0.440	1.380	4	0.620	2.380	0.42	
	21.30	88.90	11.20	35.10		15.70	60.45		
3/4	1.050	3.880	0.500	1.690	4	0.620	2.750	0.61	
	26.70	98.60	12.70	42.90		15.70	69.85		
1	1.315	4.250	0.560	2.000	4	0.620	3.120	0.86	
	33.40	108.0	14.20	50.80		15.70	79.25		
1 1/4	1.660	4.620	0.620	2.500	4	0.620	3.500	1.17	
	42.20	117.3	15.70	63.50		15.70	88.90		
1 1/2	1.900	5.000	0.690	2.880	4	0.620	3.880	1.53	
	48.30	127.0	17.50	73.15		15.70	98.60		
2	2.375	6.000	0.750	3.620	4	0.750	4.750	2.42	
	60.30	152.4	19.10	91.90		19.10	120.7		
2 1/2	2.875	7.000	0.880	4.120	4	0.750	5.500	3.94	
	73.00	177.8	22.40	104.6		19.10	139.7		
3	3.500	7.500	0.940	5.000	4	0.750	6.000	4.93	
	88.90	190.5	23.90	127.0		19.10	152.4		
3 1/2	4.000	8.500	0.940	5.500	8	0.750	7.000	6.17	
	101.6	215.9	23.90	139.7		19.10	177.8		
4	4.500	9.000	0.940	6.190	8	0.750	7.500	7.00	
	114.3	228.6	23.90	157.2		19.10	190.5		
5	5.563	10.00	0.940	7.310	8	0.880	8.500	8.63	
	141.3	254.0	23.90	185.7		22.40	215.9		
6	6.625	11.00	1.000	8.500	8	0.880	9.500	11.3	
	168.3	279.4	25.40	215.9		22.40	241.3		
8	8.625	13.50	1.120	10.62	8	0.880	11.75	19.6	
	219.1	342.9	28.40	269.7		22.40	298.5		
10	10.75	16.00	1.190	12.75	12	1.000	14.25	28.8	
	273.0	406.4	30.20	323.9		25.40	362.0		
12	12.75	19.00	1.250	15.00	12	1.000	17.00	43.2	
	323.8	482.6	31.75	381.0		25.40	431.8		
14	14.00	21.00	1.380	16.25	12	1.120	18.75	58.1	
	355.6	533.4	35.10	412.8		28.40	476.3		
16	16.00	23.50	1.440	18.50	16	1.120	21.25	76.0	
	406.4	596.9	36.60	469.9		28.40	539.8		
18	18.00	25.00	1.560	21.00	16	1.250	22.75	93.7	
	457.2	635.0	39.60	533.4		31.75	577.9		
20	20.00	27.50	1.690	23.00	20	1.250	25.00	122	
	508.0	698.5	42.90	584.2		31.75	635.0		
24	24.00	32.00	1.880	27.25	20	1.380	29.50	185	
	609.6	812.8	47.80	692.2		35.10	749.3		

Notes

- Weights are based on manufacturer's data and are approximate.
- Flat face flanges may be provided at full thickness, C, or with raised face removed (the latter is nonstandard).
- For ring joint facings see page 8-6.
- For tolerances see page 8-4.