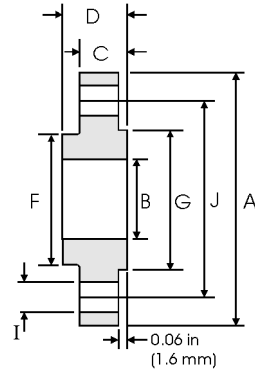


# Slip-On Flanges - ANSI B16.5 300lbs



Pipe		Flange Data				Hub	Raised Face	Drilling Data			Weight
Nominal Pipe Size		<b>A</b>	<b>B</b>	<b>C</b>	<b>D</b>	<b>F</b>	<b>G</b>	<b>H</b>	<b>I</b>	<b>J</b>	
	Outside Diameter	Overall Diameter	Inside Diameter	Flange Thickness min	Overall Length	Hub Diameter	Face Diameter	Number of Holes	Bolt Hole Diameter	Diameter of Circle of Holes	kg/ piece
	in mm	in mm	in mm	in mm	in mm	in mm	in mm		in mm	in mm	
1/2	0.840	3.750	0.880	0.560	0.880	1.500	1.380	4	0.620	2.620	0.64
	21.30	95.20	22.40	14.20	22.40	38.10	35.10		15.70	66.55	
3/4	1.050	4.620	1.090	0.620	1.000	1.880	1.690	4	0.750	3.250	1.12
	26.70	117.3	27.70	15.70	25.40	47.70	42.90		19.10	82.50	
1	1.315	4.880	1.360	0.690	1.060	2.120	2.000	4	0.750	3.500	1.36
	33.40	123.9	34.50	17.50	26.90	53.80	50.80		19.10	88.90	
1 1/4	1.660	5.250	1.700	0.750	1.060	2.500	2.500	4	0.750	3.880	1.68
	42.20	133.3	43.20	19.00	26.90	63.50	63.50		19.10	98.60	
1 1/2	1.900	6.120	1.950	0.810	1.190	2.750	2.880	4	0.880	4.500	2.49
	48.30	155.4	49.50	20.60	30.20	69.85	73.15		22.40	114.3	
2	2.375	6.500	2.440	0.880	1.310	3.310	3.620	8	0.750	5.000	2.87
	60.30	165.1	62.00	22.30	33.20	84.00	91.90		19.10	127.0	
2 1/2	2.875	7.500	2.940	1.000	1.500	3.940	4.120	8	0.880	5.880	4.32
	73.00	190.5	74.70	25.40	38.10	100.0	104.6		22.40	149.4	
3	3.500	8.250	3.570	1.120	1.690	4.620	5.000	8	0.880	6.620	5.85
	88.90	209.5	90.70	28.40	42.90	117.3	127.0		22.40	168.1	
3 1/2	4.000	9.000	4.070	1.190	1.750	5.250	5.500	8	0.880	7.250	7.34
	101.6	228.6	103.4	30.20	44.40	133.3	139.7		22.40	184.2	
4	4.500	10.00	4.570	1.250	1.880	5.750	6.190	8	0.880	7.880	9.61
	114.3	254.0	116.1	31.70	47.70	146.0	157.2		22.40	200.1	
5	5.563	11.00	5.660	1.380	2.000	7.000	7.310	8	0.880	9.250	12.3
	141.3	279.4	143.8	35.00	50.80	177.8	185.7		22.40	234.9	
6	6.625	12.50	6.720	1.440	2.060	8.120	8.500	12	0.880	10.62	15.6
	168.3	317.5	170.7	36.50	52.30	206.2	215.9		22.40	269.7	
8	8.625	15.00	8.720	1.620	2.440	10.25	10.62	12	1.000	13.00	24.2
	219.1	381.0	221.5	41.10	61.90	260.3	269.7		25.40	330.2	
10	10.75	17.50	10.88	1.880	2.620	12.62	12.75	16	1.120	15.25	34.1
	273.0	444.5	276.3	47.70	66.55	320.5	323.9		28.40	387.3	
12	12.75	20.50	12.88	2.000	2.880	14.75	15.00	16	1.250	17.75	49.8
	323.8	520.7	327.1	50.80	73.15	374.6	381.0		31.70	450.8	
14	14.00	23.00	14.14	2.120	3.000	16.75	16.25	20	1.250	20.25	69.9
	355.6	584.2	359.1	53.80	76.20	425.4	412.8		31.70	514.4	
16	16.00	25.50	16.16	2.250	3.250	19.00	18.50	20	1.380	22.50	88.1
	406.4	647.7	410.5	57.15	82.50	482.6	469.9		35.00	571.5	
18	18.00	28.00	18.18	2.380	3.500	21.00	21.00	24	1.380	24.75	109
	457.2	711.2	461.8	60.45	88.90	533.4	533.4		35.00	628.7	
20	20.00	30.50	20.20	2.500	3.750	23.12	23.00	24	1.380	27.00	134
	508.0	774.7	513.1	63.50	95.20	587.2	584.2		35.00	685.8	
24	24.00	36.00	24.25	2.750	4.190	27.62	27.25	24	1.620	32.00	201
	609.6	914.4	616.0	69.85	106.4	701.5	692.2		41.00	812.8	

**Notes**

- Weights are based on manufacturer's data and are approximate.
- Flat face flanges may be provided at full thickness, C, or with raised face removed (the latter is nonstandard).