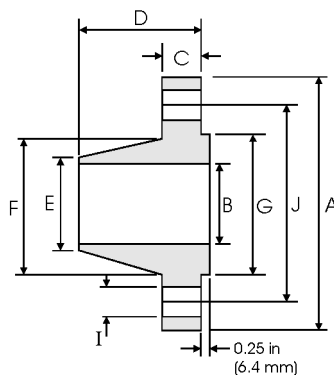




# Weld Neck Flanges - ANSI B16.5 Class 900lbs



Pipe		Flange Data				Hub Data		Raised Face	Drilling Data			Weight
Nominal Pipe Size		<b>A</b>	<b>B</b>	<b>C</b>	<b>D</b>	<b>E</b>	<b>F</b>	<b>G</b>	<b>H</b>	<b>I</b>	<b>J</b>	
	Outside Diameter	Overall Diameter	Inside Diameter	Flange Thickness min	Overall Length	Diameter at Weld Bevel	Hub Diameter	Face Diameter	Number of Holes	Bolt Hole Diameter	Diameter of Circle of Holes	kg/ piece
	in mm	in mm	in mm	in mm	in mm	in mm	in mm	in mm		in mm	in mm	
1/2	0.840	4.750	To be specified by Purchaser	0.880	2.380	0.840	1.500	1.380	4	0.880	3.250	1.87
	21.30	120.6		22.30	60.45	21.30	38.10	35.00		22.30	82.50	
3/4	1.050	5.120		1.000	2.750	1.050	1.750	1.690	4	0.880	3.500	2.56
	26.70	130.0		25.40	69.85	26.70	44.00	42.90		22.30	88.90	
1	1.315	5.880		1.120	2.880	1.320	2.060	2.000	4	1.000	4.000	3.74
	33.40	149.3		28.40	73.15	33.50	52.30	50.80		25.40	101.6	
1 1/4	1.660	6.250		1.120	2.880	1.660	2.500	2.500	4	1.000	4.380	4.33
	42.20	158.7		28.40	73.15	42.20	63.50	63.50		25.40	111.2	
1 1/2	1.900	7.000		1.250	3.250	1.900	2.750	2.880	4	1.120	4.880	5.94
	48.30	177.8		31.70	82.50	48.30	69.85	73.15		28.40	123.9	
2	2.375	8.500		1.500	4.000	2.380	4.120	3.620	8	1.000	6.500	10.8
	60.30	215.9		38.10	101.6	60.45	104.6	91.90		25.40	165.1	
2 1/2	2.875	9.620		1.620	4.120	2.880	4.880	4.120	8	1.120	7.500	15.0
	73.00	244.3		41.10	104.6	73.15	123.9	104.6		28.40	190.5	
3	3.500	9.500		1.500	4.000	3.500	5.000	5.000	8	1.000	7.500	13.7
	88.90	241.3		38.10	101.6	88.90	127.0	127.0		25.40	190.5	
4	4.500	11.50		1.750	4.500	4.500	6.250	6.190	8	1.250	9.250	22.5
	114.3	292.1		44.40	114.3	114.3	158.7	157.2		31.70	234.9	
5	5.563	13.75		2.000	5.000	5.560	7.500	7.310	8	1.380	11.00	37.4
	141.3	349.2		50.80	127.0	141.2	190.5	185.7		35.00	279.4	
6	6.625	15.00	2.190	5.500	6.630	9.250	8.500	12	1.250	12.50	47.7	
	168.3	381.0	55.60	139.7	168.4	234.9	215.9		31.70	317.5		
8	8.625	18.50	2.500	6.380	8.630	11.75	10.62	12	1.500	15.50	81.3	
	219.1	469.9	63.50	162.0	219.2	298.4	269.7		38.10	393.7		
10	10.75	21.50	2.750	7.250	10.75	14.50	12.75	16	1.500	18.50	119	
	273.0	546.1	69.85	184.1	273.0	368.3	323.8		38.10	469.9		
12	12.75	24.00	3.120	7.880	12.75	16.50	15.00	20	1.500	21.00	157	
	323.8	609.6	79.25	200.1	323.8	419.1	381.0		38.10	533.4		
14	14.00	25.25	3.380	8.380	14.00	17.75	16.25	20	1.620	22.00	180	
	355.6	641.3	85.80	212.8	355.6	450.8	412.7		41.10	558.8		
16	16.00	27.75	3.500	8.500	16.00	20.00	18.50	20	1.750	24.25	217	
	406.4	704.8	88.90	215.9	406.4	508.0	469.9		44.40	615.9		
18	18.00	31.00	4.000	9.000	18.00	22.25	21.00	20	2.000	27.00	292	
	457.2	787.4	101.6	228.6	457.2	565.1	533.4		50.80	685.8		
20	20.00	33.75	4.250	9.750	20.00	24.50	23.00	20	2.120	29.50	362	
	508.0	857.2	107.9	247.6	508.0	622.3	584.2		53.80	749.3		
24	24.00	41.00	5.500	11.50	24.00	29.50	27.25	20	2.620	35.50	665	
	609.6	1041.4	139.7	292.1	609.6	749.3	692.1		66.55	901.7		

**Notes**

- Dimension B corresponds to the pipe inside diameter. Values quoted assume 40S/Standard wall thickness.
- Weights are based on manufacturer's data and are approximate.